



May 2026

snippets

CHAIRLADY'S REPORT

Dear members

Our focus remains on member participation and ensuring that our activities continue to reflect the interests and needs of the group. To support this, member feedback will be gathered on important areas such as the classes, workshop schedules, venues, demonstrations, and challenge topics. Please give it a thought, come with ideas and we shall discuss these at the general meeting.

Several events and workshops are scheduled in the coming months. In June, the group will hold a free-motion quilting session with Rohini. In addition, a French Braid workshop led by Sheryl is planned in the near future. Dates, venue and details will be shared soon.

We encourage members to support our free sewing station at the Affordable Art Show taking place on the 23rd and 24th of May at the Nairobi National Museum. Sign-up sheet will be circulated at the meeting, please volunteer to help us get the exposure our guild deserves.

Looking ahead to August, free sewing days will be held at different areas. We are currently in talks with Buttons and Bows at Yaya Center for a partnership. Please send in your suggestions for other venues.

The SA Challenge quilt mini exhibition will be held in August once all the quilts come back from SA. Thanks to all the participants, we have a lovely Kenyan inspired collection.

I would like to thank all members and volunteers for their continued support, participation, and commitment to the success of our group's activities.

Love

Amber

*Quilt used for Border and
Background throughout Snippets by
Veena Sennik*



ALL ABOUT MACHINE APPLIQUÉ

A good Machine Appliqué is achievable, by correctly using some important factors. The correct foot, needles and threads are the main tools for creating beautiful quilts on your domestic machines.

For Machine Appliqué, **Open Toe Clear Appliqué** foot, also known as Zig Zag Open Toe Foot, is the best option. This type of foot is clear to give you better visibility and the Open Toe is wide enough not to distort or interfere with the size of our stitches. The bottom has a rectangular indentation or space to let the satin or any stitch glide through without a drag. The metal at the base for most of the feet is an added advantage to reduce the drag.



Open Toe Appliqué Foot - *Front*



Open Toe Appliqué Foot – *Back*

Needles are the second most important factor. Sewing Machine needles are designed to suit the system of your sewing machine. Each system then has a size coordinating with the density of the fabric being used, often colour coded and have different point e.g. ballpoint, sharp etc.

For Machine Appliqué, a Microtex or Top Stitch size 80/12 or 90/14 is recommended for light to medium cotton fabric. These kinds are extra sharp to pierce through multiple layers of fabric and stabilizers for Appliqué and have a large groove and eye to accommodate larger diameters of threads sometimes used for decorative stitches. It is best advised to try the needle on a sampler of the same quality to check the size of the needle.



Schmetz Needles with systems and sizes



All Sewing Machine threads are differentiated by having a weight given to them which varies between manufacturers. The number given by the weight are inversely proportionate to the thickness of the threads. Eg the higher the number the finer/thinner the thread will be. A good quality thread sometimes comes with a cost but delivers better results.

Needle eye should ideally be 40% larger than the diameter of the thread. A simple test to know is to glide the needle in the thread holding the thread at a 45-degree angle. If it hops or skips, it means the thread is too thick for the needle.



Most Suitable feet, needles and threads for machine appliqué stitches

1. Satin Stitch:

Presser Foot – Open Toe Clear Appliqué/Zig Zag foot

Needles – Shmetz Mictrotex sharps 80/12 or Shmetz 75/11 or 90/14

Threads – Cotton/ Polyester weight 30, 40, 50 – If you take a very fine or thin thread it might not fill the fabric with satin stitches completely

2. Buttonhole Stitch:

Presser Foot – Open Toe Clear Appliqué/Zig Zag foot

Needles – Shmetz Mictrotex sharps 80/12 or Shmetz 75/11 or 100/16 (if using a thicker contrasting thread)

Threads – Cotton/ Polyester 60 to 80 weight threads

3. Top Stitch:

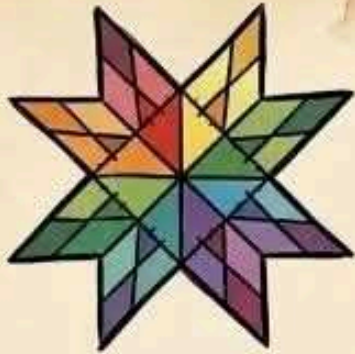
Presser Foot – Free Motion Foot

Needles – Shmetz Mictrotex sharps 80/12 or Shmetz 75/11

Threads – Cotton/ Polyester 50 weight threads

QUOTE

Submitted by Lakhbir Virdee



Quilting:

**Where you
refuse to throw
out scraps
because they
might become a
quilt 48 years
from now.**





MAKING OF THE UNITY QUILT



The original Amani unity quilt was designed in 1999, it was a collective effort by artists and designers working together at Amani ya Juu at the time. All the materials used are from local African prints. They are then hand-crafted using techniques of batik, tie-dye and ink-stamped using African motifs. Several African women were involved in stitching the different panels of the quilt. The embroidery work is done on a quilting machine.

Each quilt is unique because the fabrics are hand-selected in the local market before they are hand-crafted and designed at the Amani workshop. Some of the women involved in the construction of the original unity quilt were refugees from other countries of Africa and others were Kenyans. Each panel of the quilt represents an Amani woman who was interviewed about traditions of peace and reconciliation in her home country.

Read more about it on the link below:

https://amaniafrica.org/blogs/amani-ya-juu/the-amani-ya-juu-unity-quilt?srsltid=AfmBOopT6QHoz07_J7awlLIOe3MV9t7wBl3nu3n-K2gXa_s00NtcatwE#:~:text=The%20original%20Amani%20unity%20quilt,ya%20Juu%20at%20the%20time.



Squaring Up Fabric

By following these steps, you can square up your quilting fabric effectively and make sure that your cuts are exact. You will avoid wobbly bits along your strips.

- First it is advisable to press your fabric to make sure that there are no creases. If you are a believer in using starch, this is when you should apply it. Even small wrinkles will cause problems.
- Find the tightly woven selvage edges on your fabric. They usually have the maker's name or color dots. The selvage runs along the lengthwise grain, so it helps you identify how the fabric should lie. Next, fold the fabric selvage to selvage, aligning the edges together.
- Then, pick up the fabric by the selvage edges and gently slide the edges back and forth until the fabric lays flat without any bulges at the bottom. If the bottom edge looks diagonal, then it is off grain. You must adjust until the fabric hangs smoothly and the fold line is straight.
- To create multiple layers, place the fabric down and bring up the bottom fold to the selvage edge. I lift the fabric again to make sure that there are no bulges along the fold. This makes four layers and will be easier to cut strips.
- Carefully place the fabric onto the cutting mat with the folded edge closest to you and the selvage edges at the top and prepare to square up the edge of the right side of your fabric. Place your acrylic ruler perpendicular to the fold. Using your rotary cutter, trim a small amount from the raw edge to create a straight, clean line. This becomes your new, squared edge. Before you pick up your fabric, make sure that all four layers have been trimmed so you have a perfect 90 degree angle with the with the edge you want to cut. Trim.
- Always double check before making any cuts.
- By following these steps, you can square up your quilting fabric effectively and make sure that your cuts are exact. You will avoid wobbly bits along your strips.
- It is also advisable to repeat this process when cutting many strips.

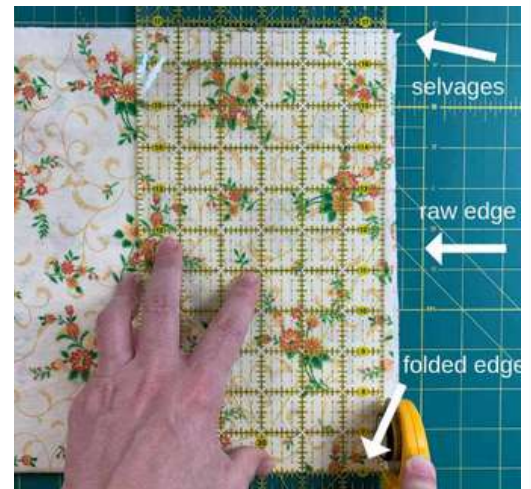


Image credit: *The Ruffled Purse*



Excited to make a difference?

Our drawstring bags project is a hit—thanks to Samita for the idea and everyone for your amazing attention to detail and creativity!

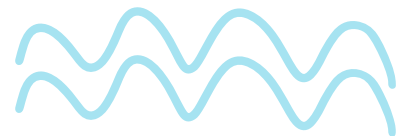
Together, we're creating lasting memories for the young students at Arama Charitable Trust School.



Bags made lovingly by Carroline Harris



Beautiful appliqué by Gretchen S. Mwaura



Having Fun With Hexis



On Saturday 9th May, Hina and I led a group of students in a very fun EPP hexi technique class. This simple and addictive patchwork style has been a favorite of ours for a long time - it was truly a joy to share this with stitching friends.

Did you know: The earliest hexagon template that quilt researchers have found was made in England in 1770. Hexagon became one of the most popular patterns in England by 1830.

In 1835 Godey's women's magazine published a pattern for this block called the Hexagon pattern. It had complete instructions for the paper-piecing construction technique.

Hexagon patterns, always popular in the United States, blossomed in the 1930s under the moniker Grandmother's Flower Garden.

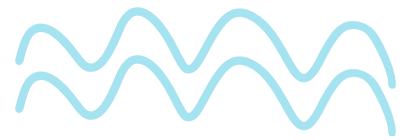
Check out this quilt that is kept in the Illinois State Museum, an early example of the hexagon patterns that blossomed in the 1930s under the name Grandmother's Flower Garden.

https://www.museum.state.il.us/muslink/art/htmls/ks_piece_hexatkin.html

Our Pinterest page is packed with delicious inspiration and ideas for your next project:

<https://www.pinterest.com/kenyaquiltguild1/hexagons-for-quilting/>





Help! I changed my rotary blade and now it won't work!

By following these steps for a straight handle rotary cutter, you will ensure that this does not happen again:

Before you embark on changing your rotary blade, make sure that you have only one new blade, not two or three that have been sealed together. Blades that come in multiple packets are oiled and tend to stick together.

The next important step is to make sure that the blade cutter is in the LOCKED position on the handle.

Put the rotary cutter on your table, blade side down.

****NOTE: As you take apart the cutter, place each piece that you remove on your table in a line in the order that you remove them so you can reverse the order later when you assemble the cutter.**

Turn the nut anticlockwise, unscrew, remove the nut and place it on the table. Next remove the washer and place it next to the nut without turning it over. The curved side should be up.

Pull the handle off the the stem that holds the blade and place it next to the washer with the correct side facing up.

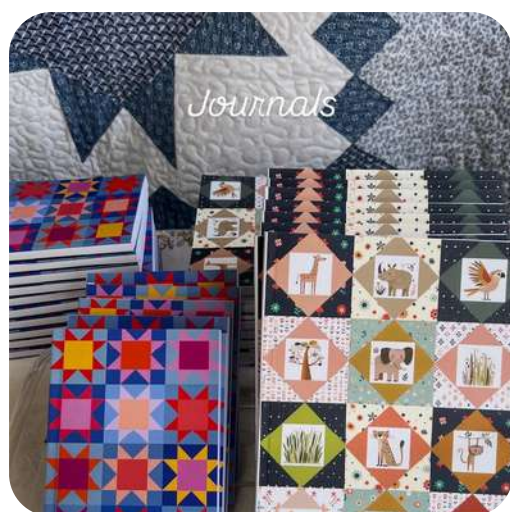
With care remove the old blade from the stem and replace it with the new blade. (Take care when removing the blade and dispose of it in a safe place.)

Place the handle back onto the stem, followed by the washer curved side up onto the stem and then the nut gets screwed on clockwise until the disk starts to spin.

The blade change for an ergonomic cutter is slightly different: It has a larger plastic washer which has to be removed which is located between the handle and the metal washer.



KQG MERCHANDISE



Become a
MEMBER in 2026 and...

Receive a
certificate...



and this
BEAUTIFUL
Starter Pack





KENYA QUILT GUILD MEETINGS

APRIL

SATURDAY 3RD

Trademark Hotel

THURSDAY 16TH

Sikh Union

MAY

SATURDAY 2ND

Trademark Hotel

THURSDAY 21ST

Sikh Union

JUNE

SATURDAY 6TH

Trademark Hotel

THURSDAY 18TH

Sikh Union

10AM - NOON

FREE BEGINNER QUILTING CLASSES AFTER EACH MEETING

WWW.KENYAQUILTGUILD.ORG
KENYAQUILTGUILD1@GMAIL.COM



THE GUILD HAS JOINED PINTEREST!

www.pinterest.com/kenyaquiltguild1/





LIBRARY

You can now borrow great quilting books for a small fee from our library at the meetings. Please return any library books you may have borrowed in the previous years.

BOOK RENTAL: 100 Kes



WEBSITE

www.kenyaquiltguild.org



DOOR PRIZES

You have the opportunity to win a fun prize at each meeting! Don't forget to sign in at the door when you get your name tag.

FOLLOW US ON SOCIAL MEDIA!

DID YOU KNOW? WE ARE ON FACEBOOK, INSTAGRAM AND NOW PINTEREST! PLEASE LIKE, FOLLOW AND SHARE WITH ANYONE WHO'D LIKE TO SEE WHAT THE GUILD IS UP TO.



PINTEREST:
kenyaquiltguild1



FACEBOOK:
thekenyaquiltguild



INSTAGRAM:
thekenyaquiltguild

PAYMENTS:

You may pay for Kenya Quilt Guild subscription of your classes at one of our monthly meetings or by

Paybill no: 4043847

Account Number:

Your Name

KQG'S MEETINGS:

TIME: 10:00 AM TILL NOON
(Kenyan Standard Time)

Monthly Meetings:
3RD THURSDAY OF
THE MONTH
SIKH UNION

1ST SATURDAY OF
THE MONTH
TRADEMARK HOTEL

KQG CO-ORDINATES:

Email: kenyaquiltguild1@gmail.com

Website: www.kenyaquiltguild.org

Disclaimer: The content in this newsletter is solely for the benefit of KQG members and is not intended for any commercial purpose.